



OX Updater

OX Updater:

Publication date Wednesday, 04 December 2013 v.6.20.1

Copyright © 2006-2013 OPEN-XCHANGE Inc. , This document is the intellectual property of Open-Xchange Inc., Tarrytown, NY, USA, The document may be copied in whole or in part, provided that each copy contains this copyright notice. The information contained in this book was compiled with the utmost care. Nevertheless, erroneous statements cannot be excluded altogether. Open-Xchange Inc., the authors and the translators are not liable for possible errors and their consequences. The names of software and hardware used in this book may be registered trademarks; they are used without guarantee of free usability. Open-Xchange Inc. generally follows the spelling conventions of the manufacturers. The reproduction of brand names, trade names, logos etc. in this book (even without special marking) does not justify the assumption that such names can be considered free (for the purposes of trademark and brand name regulations)Please direct any recommendations or comments to documentation@open-xchange.com

Table of Contents

1	OX Updater	1
1.1	Features.	1
1.2	Functioning:.	1

Chapter 1. OX Updater

1.1. Features

- installs or updates any MSI installations on Windows PCs

1.2. Functioning:

- Client application is launched on PC that is to be updated
- Depending on the settings (automatically or manually) the Updater loads a small XML file that contains information on available packages on the server
- Then, the Updater synchronizes the information with the already installed programs via the MSI database integrated in Windows
- The user will be informed about new updates via a „balloontip“ (and an animated tray icon):

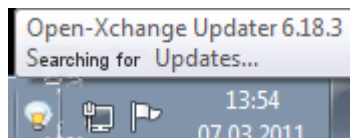


Figure 1.1.

- Now the user can display a list of updates.
- If the OXTender for MS Outlook is pre-configured by the Updater tool, the PST file is created in %APPDATA%\Open-Xchange from version 6.15.1 on.
- When clicking on an update, further information will be displayed in the **Details** field.
- In order to proceed, click **Next**.
- You are asked to enter your credentials for the Open-Xchange Server.
- The installation starts automatically then.

1.2.1. The Updater settings

The following options are available in the Updater:

General
Connection
Advanced
Infostore

1.2.1.1. Settings

Following intervals are possible:

- Every 3 days
- Daily
- Weekly

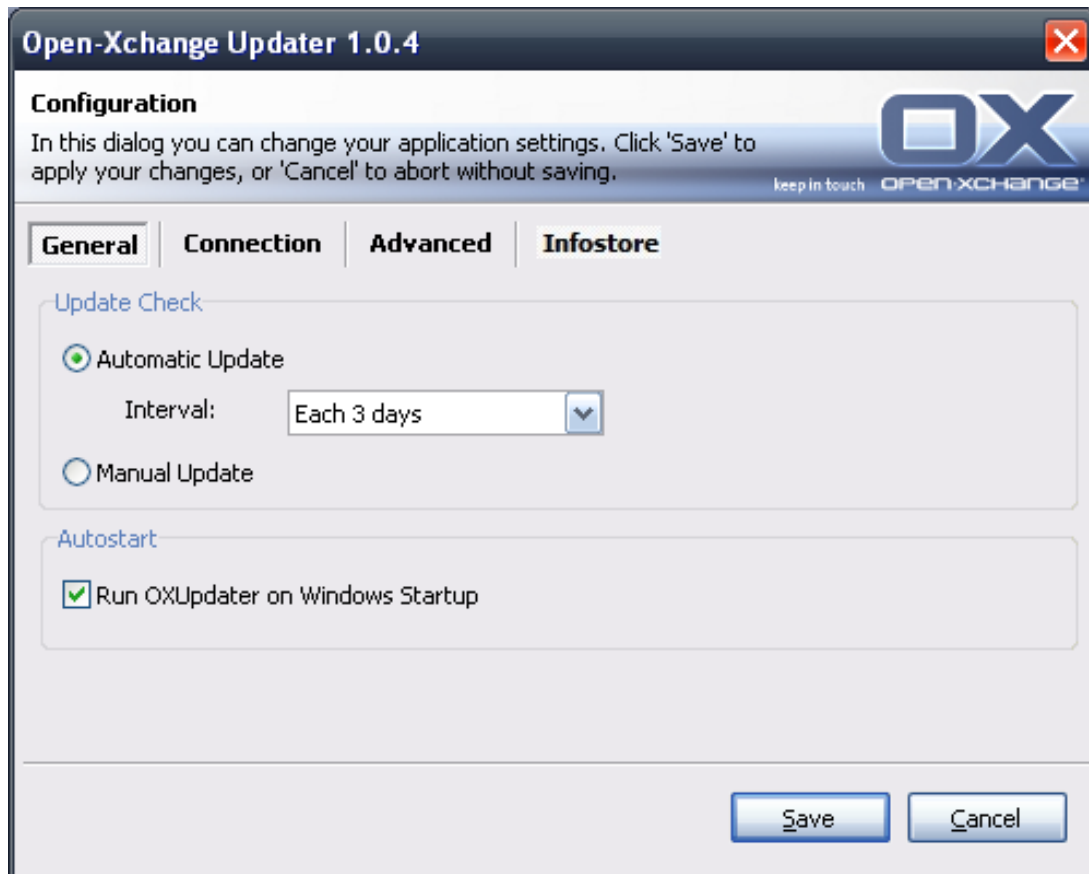


Figure 1.2.

1.2.1.2. Connection:

- **Update Server URL** is the address where update.xml is made available. This field might be grayed out if it was deactivated by the hoster.

1.2.1.3. Advanced:

- An OXUpdater log file is created in the Updater directory. There, the log level can be set. It is also possible to create a MSI.log file of the installation process.
- **Skipped Updates:** Here, you can restore skipped updates, i. e. remove them from the 'Blacklist'. In the next update check those updates will again be listed under **Available**, provided the hoster still offers them.

1.2.1.4. InfoStore:

When you initially open the **InfoStore** tab in the OX Updater settings dialog, you are presented with a link. If you click on this link, a Microsoft patch is installed that maps the Infostore with the drive.

Note: The mapping is supported by Windows Vista and later versions.

Here you can connect to the InfoStore via the network drive.

- **Server:** Here you have to make the following entries: \\servername\infostore. When using an ssl connection: \\servername@\infostore
- **Credentials:** Enter your username and password
- **Drive** Select the correct drive.
- **Connect at startup** If this checkbox is activated, a connection to the drive is activated upon starting the Updater.
