



keep in touch **OPEN·XCHANGE®**

# Connector for Microsoft Outlook







<b>1 Connector for Microsoft Outlook</b>	<b>1</b>
1.1 Outlook	1
1.2 Outlook	1
1.3 Outlook	2
1.3.1 Outlook	2
1.4 Outlook	2
1.5 Outlook	3
1.6 Outlook	3
<b>2 The Connector for MS Outlook</b>	<b>5</b>
2.1 Outlook	5
2.2 Outlook	5
2.3 Outlook	6
<b>3 Connector for Microsoft Outlook</b>	<b>7</b>
3.1 Outlook	7
3.1.1 Outlook	7
3.1.2 Outlook PC	7
3.1.2.1 Outlook : Outlook	7
3.1.2.2 Back-end	7
3.1.2.3 MS Outlook:	7
3.1.3 Cookie	7
3.1.4 Open Xchange Outlook	7
3.1.5 Outlook	8
3.2 Outlook	8
3.2.1 Outlook :	8
3.3 Outlook	8
3.3.1 Microsoft Outlook Outlook	11
3.3.1.1 Outlook 2003 Outlook :	11
3.3.1.2 Outlook :	11
3.3.1.3 Outlook 2007/2010 Outlook :	11
3.3.1.4 Outlook :	12
3.3.1.5 Outlook :	12
3.3.2 MS Outlook Outlook	12
<b>4 Outlook</b>	<b>15</b>
4.1 Outlook Connector for MS Outlook Outlook	15
4.2 Connector for Microsoft Outlook Outlook	15
4.2.1 Outlook Connector for Microsoft Outlook Outlook	15
4.2.2 Outlook Outlook	15
4.2.3 Exchange Outlook	16
4.2.4 Hosted Exchange Outlook	16
4.2.5 Outlook Exchange Outlook	16
4.3 Connector for Microsoft Outlook Outlook	16
4.3.1 Outlook Outlook	16

4.3.1.1	□□□□□□□□	.....	17
4.3.1.2	□□□□□□	.....	18
4.3.1.3	□□□□□□	.....	18
4.3.2	□□□□	.....	19
4.3.3	□□□□□□□□	.....	19
4.3.4	□□□□□□□□	.....	19
4.3.5	□□□□□□	.....	19
4.3.5.1	□□	.....	19
4.3.5.2	□□	.....	20
4.3.5.3	□□□□	.....	20
4.3.5.4	□□□□□□□□	.....	20
4.3.5.5	Connector for Microsoft Outlook □□□□	.....	20
4.4	Connector for Microsoft Outlook □□□□□□□□□□	.....	20
4.5	Connector for Microsoft Outlook □□□□□□□□	.....	20
<b>5</b>	<b>Outlook □ Connector for Microsoft Outlook □□□□□</b>	<b>.....</b>	<b>21</b>
5.1	□□□□□□	.....	21
5.2	□□□□□□□□	.....	21
5.2.1	□□□□□□	.....	21
5.3	□□□□ □□□□□□	.....	21
5.3.1	□□□□□□ □□□□	.....	22
5.3.2	□□□□□□	.....	23
5.3.3	□□□□□□□□□□	.....	23
5.4	□□□□□□□□	.....	23
5.4.1	□□□□□□ □□□□□□□□	.....	23
5.4.2	□□□□□□□□□□□□□□	.....	24
5.5	□□□□□□□□	.....	24
5.6	□□□□□□ □ □□□□□□□□□□	.....	24
5.6.1	□□□□□□□□□□	.....	24
5.6.1.1	□□□□□□	.....	25
5.6.1.2	□□□□□□□□	.....	25
5.6.1.3	□□□□□□	.....	25
5.7	□□□□□□□□	.....	26
5.8	□□□	.....	27
5.8.1	□□□□□□	.....	27
5.8.1.1	Windows7 □□□□□□□□□□□□□□ :	.....	27
5.9	□□□□□□	.....	28
5.9.1	□□□□□□□□□□	.....	28
5.9.2	□□□□□□□□□□	.....	28
5.9.3	□□□	.....	29
5.9.4	□□□□□□□□□□□□□□	.....	29
5.9.5	□□□□□□□□□□□□□□□□	.....	30
5.10	□□	.....	30
5.10.1	□□□□□□	.....	30
<b>6</b>	<b>□□ B: □□□□□□□□ □□□□□□</b>	<b>.....</b>	<b>31</b>
6.1	□□□□□□□□□□□□□□	.....	31
6.2	□□□□□□□□□□□□ □□□□□□	.....	33
6.3	□□□□□□□□□□□□□□	.....	34
□□	.....		35

---

Software License Agreement ..... 37



# 1 Connector for Microsoft Outlook Outlook

Personal Information Management Suite (PIM) MS Outlook Open-Xchange  
MS Outlook Open-Xchange  
MS Outlook Open-Xchange

Open-Xchange

Open-Xchange MS Outlook  
Mozilla Firefox IE Safari Chrome  
PDA

Open-Xchange Open-Xchange

## 1.1 Outlook

Connector for Microsoft Outlook Open-Xchange Outlook Open-Xchange  
Outlook  
Connector for Microsoft Outlook

## 1.2

Connector for Microsoft Outlook Open-Xchange  
Outlook **OXtender2** Microsoft  
Outlook Outlook "Folder List"  
The Connector for Microsoft Outlook Open-Xchange:

"Folder" Outlook Open-Xchange





### 1.5. □□

□□□□□□□□□□□□□□□□ □□□□□□□□ Outlook □□□□□□□□□□□□□□□□□□□□□□□□□□  
□□  
□□□□□□□□

### 1.6. □□□

Open-Xchange □□□□ Outlook □□□□□□□□□□□□□□□□□□□□□□□□□□□□□□□□□□□□□□  
□□□□□□□□□□□□□□□□ Outlook □□□□□□□□□□□□□□□□□□□□□□□□□□□□□□□□□□□□  
□□□□□□□□□□□□□□□□□□□□



---

□□  
□□□□□□□□□□□□□□□□

---







## 3 Connector for Microsoft Outlook

### 3.1.

Connector for Microsoft Outlook

#### 3.1.1.

Open-Xchange 6 6.18

#### 3.1.2. PC

##### 3.1.2.1. :

- Windows Vista
- Windows 7
- Windows 8
- Windows Terminal Server 2003

##### 3.1.2.2. Back-end

OLOX

##### 3.1.2.3. MS Outlook:

- MS Outlook 2007
- MS Outlook 2010
- MS Outlook 2013

Office 2010 VMware Parallels Desktop MS Outlook



Outlook 2007

#### 3.1.3. Cookie

Internet Explorer Cookie

#### 3.1.4. Open Xchange

Open-Xchange

IP Open-Xchange Server

Open-Xchange

### 3.1.5. □□□□

Connector2 Windows Outlook Connector for Microsoft Outlook Outlook

### 3.2. □□□□□□ □□□□□□□□□□□□□□□□□□□□□□□□□□□□□□

Connector for Microsoft Outlook Outlook :

#### 3.2.1. □□□□□ :

http	80/tcp	World Wide Web HTTP
https	443/tcp	Secure http □□□□ □TLS/SSL 80 □□□

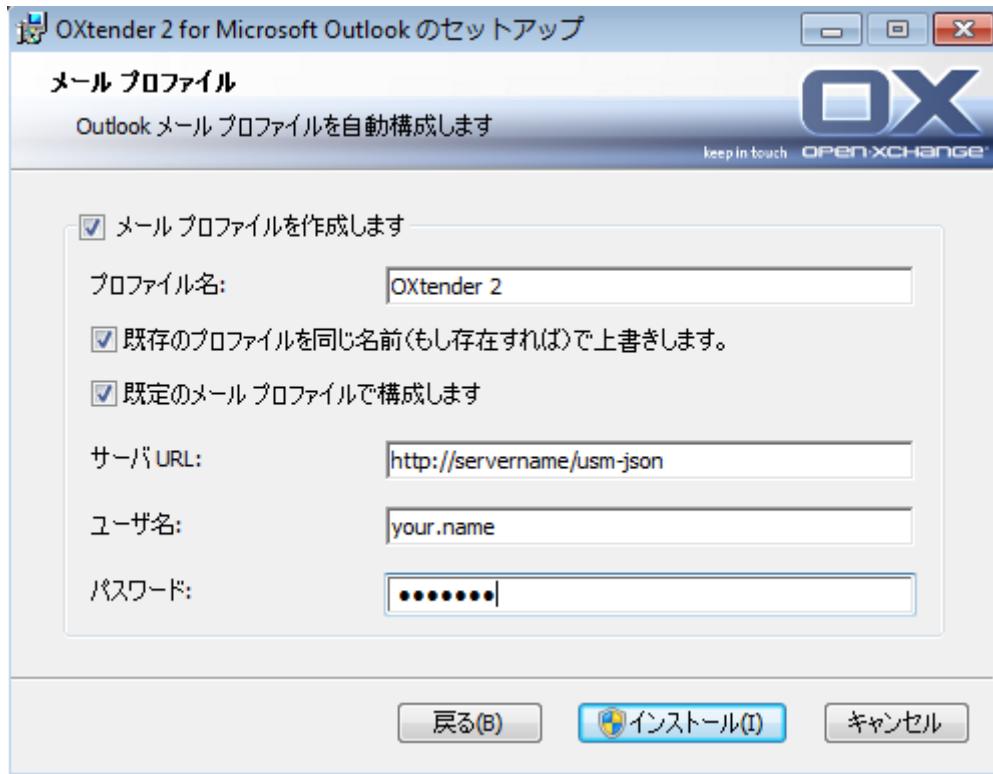
### 3.3. □□□□□□□□

.exe PC Connector for Microsoft Outlook

2 for Microsoft Outlook \_v7.0\_en-us.exe

Connector for Microsoft Outlook

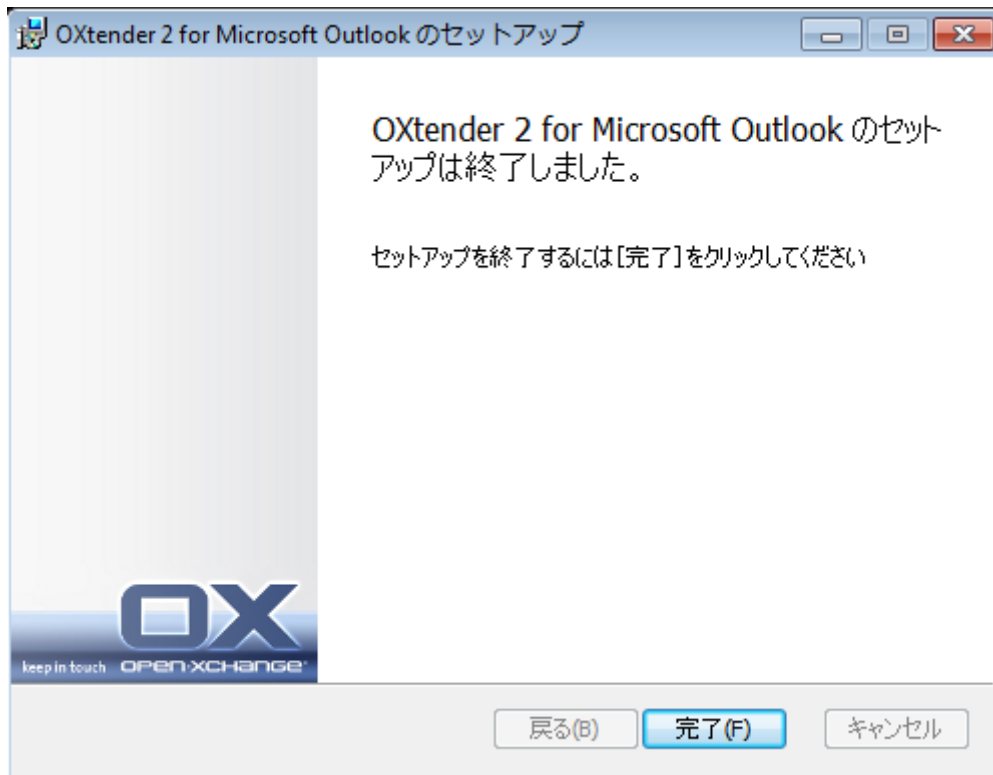




b. □□□□□□□□□□□□□□□□

4. □□□□□□□□

a.





- b. Connector for Microsoft Outlook

### 3.3.1. Microsoft Outlook

Microsoft Outlook Connector for Microsoft Outlook Exchange

#### 3.3.1.1. Outlook 2003 :

1. Windows
2. Windows
3. OXtender2
- 4.
5. OXtender2
- 6.
- 7.
- 8.
- 9.

#### 3.3.1.2. :

- 1.
- 2.
- 3.
4. OXTENDER2
5. /usm-json URL

#### 3.3.1.3. Outlook 2007/2010 :

- 1.
2. Windows
- 3.
- 4.
5. OXtender2
- 6.

- 7. □□ □□□□□□□□□□
- 8. □□□□□□□□□□□□□□□□□□□□
- 9. □□□□□□□□□□□□□□□□□□□□

**3.3.1.4. □□□□□□□□□□□□□□□□ :**

- 1. □□□□□□□□□□□□□□□□
- 2. □□ □□□□□□□□□□
- 3. □□□ □□□□ Connector □□□□□□□□□□
- 4. □□ □□□□□□□□□□
- 5. □□□□□□□□□□□□□□□□/usm-json□□□□□□□□□□□□□□□□□□□□□□□□□□  
□□

**3.3.1.5. □□□□□□□□□□□□□□□□ :**

- 1. □□□□□□□□□□□□□□□□□□□□□□□□□□□□□□□□□□□□□□
- 2. □□□□□□□□□□□□□□□□
- 3. □□□□□□□□□□□□ □□□□□□□□□□□□□□□□□□□□
- 4. OK □□□□□□□□□□□□

**3.3.2. MS Outlook □□□□□□**



---

□□□□□□□□□□ Connector 2 for MS Outlook □□□□□□□□□□□□□□  
□□□□□□□□□□

---

Microsoft Outlook □□□□□□□□□□□□□□ □□□□□□□□□□□□□□□□□□□□□□





## 4. Connector for MS Outlook

### 4.1. Connector for MS Outlook

Connector for MS Outlook Windows.

PC Connector for MS Outlook Open-Xchange

Open-Xchange IP Open-Xchange

### 4.2. Connector for Microsoft Outlook

Connector for Microsoft Outlook :

Outlook Exchange Hosted Exchange (Exchange) Exchange

#### 4.2.1. Connector for Microsoft Outlook

Open-Xchange Connector for Microsoft Outlook :

- 1.
2. Microsoft Outlook

Connector for Microsoft Outlook : smtpimap

#### 4.2.2. Outlook

Open-Xchange Outlook PST :

1. PST Importer Open-Xchange
- 2.
3. Microsoft Outlook

: Connector for Microsoft Outlook PST











XXXXX XXXXXX

XXXXX XXXXXXXXXXXX

XX XXXXXXXXXXXXXXXXXXXX  
 XX XXXXXXXXXXXXXXX XXX  
 XX XXXXXXXXXXXXXXXXXXXXXXX

XX XXXXXXXXXXXXXXXXXXXXXXX

XXXXXXXXXXXXXXXXOutlook XXX

### 4.3.5.2. XX

XX XXXXXXXXXXXXXXXXXXX XXX  
 XX

### 4.3.5.3. XXXX

XXXX XXXXXXXXXXXXXXXXXXXXXXX XXXXXXXXXXXXXXXXXXXXXXX

### 4.3.5.4. XXXXXXXX

XXXXXX XX XXXXXXXXXXXConnector XXXXXXXXXXXXXXXXXXXXXXXXXX XXXXXXXXXXX  
 XXX

### 4.3.5.5. Connector for Microsoft Outlook XXXX

**OXtender 2 for Microsoft Outlook** XXXX XXXXXXXXXXXXXXXXXXXXXXXXXXXXXXXXXXXXXXX  
 XX

## 4.4. Connector for Microsoft Outlook XXXXXXXXXX

XX Outlook XXXXXX Connector for Microsoft Outlook XXXXXXXXXXXXXXXXXXXXXXX Windows XX  
 XXXXXXXXXXXXXXXXXXXConnector for Microsoft Outlook XXXXXXXX

## 4.5. Connector for Microsoft Outlook XXXXXXXXX

XXXXXXXXXXXXXXXXConnector for Microsoft Outlook XXXX XXXXXXXXXXXXXXXXXXXXXXX  
 XXXXXXXXXXXXXXXXXXXXXXXXXXXXXXXXXXXXXXX **OXtender 2 for Microsoft Outlook** XXXX XXXXXX  
 XXXX XXXXXXXXXX XXX  
 XXXXXXXXXXXXXXX

## 5 Outlook Connector for Microsoft Outlook

### 5.1

Microsoft Exchange Server Outlook Connector :  
Microsoft Exchange Server Outlook Connector

Microsoft Exchange Server Outlook Connector



Microsoft Exchange Server Outlook Connector  
Microsoft Exchange Server Outlook Connector



Microsoft Exchange Server Outlook Connector 50  
Microsoft Exchange Server Outlook Connector



Microsoft Exchange Server Outlook Connector  
Microsoft Exchange Server Outlook Connector

Outlook Connector

### 5.2

Microsoft Exchange Server Outlook Connector  
Microsoft Exchange Server Outlook Connector

Microsoft Exchange Server Outlook Connector Open-Xchange  
Microsoft Exchange Server Outlook Connector Open-Xchange

#### 5.2.1

Microsoft Exchange Server Outlook Connector IMAP :  
Microsoft Exchange Server Outlook Connector Oxtender2  
Microsoft Exchange Server Outlook Connector IMAP  
; Microsoft Exchange Server Outlook Connector  
Microsoft Exchange Server Outlook Connector Outlook  
Microsoft Exchange Server Outlook Connector Open-Xchange

### 5.3

Open-Xchange Connector :

Microsoft Exchange Server Outlook Connector  
Microsoft Exchange Server Outlook Connector  
Microsoft Exchange Server Outlook Connector

Microsoft Exchange Server Outlook Window  
Microsoft Exchange Server Outlook Window (Microsoft Outlook -> Microsoft Exchange Server Outlook Window)









□□□ □□□□□ □□□□□ □□ □□□□□ □□□□

□□□ 8 □□□□□□□□□□□□ □□□□□□□□□□□□ □□□□□□□□□□□□  
□□□□ □□□□ □□□□

□5.1

### 5.7. □□□□□□□□

Outlook □□□  
□□□ :

1. □□□□□□□□□□□□□□□□□□□□□□□□
  2. □□□□□□□□□□□□□□ □□□□□ □□□□□□□□
  3. **Outlook** □□□□□ □□□□□□ □□□□□□□□□□□□□□□□□□□□□□□□□□□□  
□□□□
-





## 5.9.

### 5.9.1.

1. Outlook
  - 2.
  - 3.
  - 4.
  - 5.
- 

### 5.9.2.

- |  |  |
|--|--|
|  |  |
|  |  |
|  |  |
|  |  |
|  |  |
|  |  |
|  |  |
|  |  |
|  |  |
|  |  |
|  |  |
|  |  |
|  |  |
|  |  |
|  |  |
|  |  |







Microsoft Outlook		Open-Xchange □□□	
□□□	□□□□□□□□□□	□□□□	□□□□□□□□□□
	□□□□□□	□□□□	□□
	□□□□□□□□	□□□□	□□□□
	□□□□□□□□	□□□□	□□□□
	□□□□□□□□	□□□□	□□□□
	□/□□□□□□□□	□□□□	□
	□□□□□□	□□□□□□	□□ :
	□□□□□□□□	□□□□□□	□□□□
	□□□□□□□□	□□□□□□	□□□□
	□□□□□□□□	□□□□□□	□□□□
	□/□□□□□□□□	□□□□□□	□
	□□□□□□□□	□□□□	□□ (□□□)
	□□□□(□□□)	□□□□	□□□□ (□□□)
	□□□□(□□□)	□□□□	□□□□ (□□□)
	□□□□(□□□)	□□□□	□□□□ (□□□)
	□/□□□(□□□)	□□□□	□ (□□□)
	□□□□□ □□□□	□□□□	□□□ (□□□□)
	□□□□□2 □□□□	□□□□□□	□□□ (□□□□□□)
	□□□□□3 □□□□	□□□□	□□□ (□□□)
	<b>Web □□□</b>	□□□□	<b>URL</b>
	□□□□□□ □□□□□ □□□	□□□□	□□□□□□□□ (□□□□)
	(□□□□□□□□□□□□□□□□□□)	□□□□□□	□□□□
	(□□□□□□□□□□□□□□□□□□)	□□□□□□	□□□□□□
	□□	□□□□	□□□□
	□□□□□□	□□□□	□□□
□□	□□	□□□□	□□
	□□□	□□□□	□□□□□□□□
	□□	□□□□□□	□□
	□□	□□□□	□□
	□□	□□□□	□□
	□□□□□□	□□□□□□	□□□□□□
	□□□	□□□□	□□□
	□□□	□□□□□□	□□□
	□□□	□□□□□□	□□□

□6.1 □□□□□□□□□□□□□□







□□

□□□□

□□□□, 28  
 □□, 29  
 □□, 28  
 □□, 28  
 □□□□□□□□  
 □□  
 □□□□, 8  
 □□□□□□, 7  
 □□□□□□, 8  
 □□□□□, 8  
 □□, 8  
 □□, 7  
 cookies, 7  
 □□□□□□ PC, 7  
 □□□, 7  
 □□□□□□, 7  
 □□□□□□ □□□□□□□□, 1  
 □□□□□□, 21  
 □□□, 21  
 □□□□□□□□, 19  
 □□□□□□□□□□, 23  
 □□□□  
 □□□□□, 21  
 □□□□□□, 21  
 □□, 23  
 □□□□□□□□□□, 24  
 □□, 21  
 □□, 24  
 □□  
 □□□□□□□□□□, 24  
 □□□□□□, 25  
 □□□, 25  
 □□□, 26  
 □□□□ □□□□□□t, 21  
 □□□□□□ □□□□, 22  
 □□□□□□  
 mail filter  
 □□□□□□, 17  
 □□□□□□□□□□, 19  
 □□□ □□□□□, 16  
 □□□□□□□□  
 □□□□□□□□, 18  
 □□□□□□□□, 18  
 □□□□□□, 18  
 □□□□□□, 17  
 □□□□□, 19  
 □□□□□, 19  
 □□□□□□□□, 11  
 □□□□, 27  
 □□, 21  
 □□, 27  
 □□□ □□□□□, 16  
 □□□□□□□□□□, 21

□□  
 □□□□□□□□, 21  
 □□□□□□□□  
 □□□□□□□□□□, 19  
 □□□□□□□□□□, 19  
 □□, 3, 30  
 □□, 30  
 □□□□□, 19  
 □□□□□□□□□□  
 □□  
 □□, 30  
 □□□□□□□□□□, 19  
 □□□□□□□□, 23  
 □□  
 □□, 30  
 □□, 21  
 □□, 3  
 □□□□, 2  
 □□  
 □□□□□□□□, 11  
 □□□□  
 □□□□□, 16  
 □□□□□, 19  
 □□□□□□□□□□□□, 11  
 □□□□, 2

**C**

Connector  
 □□□□□, 1  
 □□□□□□□□, 20  
 □□□□□□□ □□□□□□□□□□□□, 1  
 □□□□□□□□□□  
 □□, 19  
 □□, 1  
 Connector for MS Outlook  
 □□□□□□□  
 □□□□□□□□□□, 16

**M**

MS Outlook  
 □□□□□, 12



# Software License Agreement

## Open-Xchange AG Connector for Microsoft Outlook® End-User License Agreement

**Important – Please Read carefully.** This End-User License Agreement (“EULA”) is a legal agreement between you and Open-Xchange AG. You (“Licensee”) agree to be bound by the terms of this EULA by clicking “I accept” or entering “Yes” when asked whether you accept this Agreement, or by using the software. If you do not agree, do not click “I accept” and do not enter “Yes” when asked whether you accept this Agreement, and do not use the software.

### The Software

Open-Xchange Inc. (“Open-Xchange”) has created a proprietary software program called the Connector for Microsoft Outlook (the “Software”), which enables users of Microsoft Outlook to communicate with an Open-Xchange Server.

### Licensees

Licensees are individuals, firms, organizations and entities - as the case may be - that purchase licenses granting the right to use the Software in accordance with the terms of this EULA.

### License Grant

Open-Xchange grants to Licensee the non-exclusive right to install, use the Software and have the Software used by end-users authorized by Licensee, in object-code form only, under the terms of this EULA, provided that the number of end-users authorized by Licensee to use the Software does not exceed the number of end-users covered by the offering (as defined below in sec. “Term and Termination”) purchased by Licensee. Licensee shall procure that end-users authorized by Licensee to use the Software adhere to the obligations under the terms of this EULA as if such end-users were Licensees themselves. “Use” means that Licensee may install, use, access, run, or otherwise read the Software into and out of memory in accordance with the documentation and the license grant from Open-Xchange. Licensee may copy the Software and its associated documentation for Licensee’s own use (i.e., for use by one individual) and for backup and archival purposes. Any use, copying, or distribution of the Software or its associated documentation not authorized by this Agreement may result in the termination of the license granted by this Agreement.

### Restrictions

**No Publication.** Except as otherwise specifically set forth in this Agreement, Licensee may not distribute, disclose, display, transmit, publish, resell, sublicense or otherwise transfer Software, nor allow the distribution, disclosure, display, transmission, publication, resale, sublicense or transfer of the Software, to any person or entity.

**Limited Copies.** Licensee may not copy or allow copies of the Software to be made for any reason, except for Licensee’s own use (i.e., one individual) and for back-up and archival purposes.

**No Modifications or Derivative Works.** Licensee may not make any changes or modifications in the Software, nor may Licensee create derivative works of the Software. Licensee may not decompile, disassemble, decrypt, extract or otherwise reverse engineer the Software. Licensee may not remove, alter, cover, or distort any copyright, trademark or other proprietary rights notice placed by Open-Xchange in or on the Software or its documentation.

**No Unlawful Use.** Licensee may not use the Software in any unlawful manner or for any unlawful purpose.

## Term and Termination

Licensee's license to use the Software will continue in effect for so long as Licensee continues to subscribe to an offering that includes the Connector for Microsoft Outlook and pay the required subscription fees. Offering means any offering of Open-Xchange itself or of any authorized reseller and/or webhoster providing application services. Licensee's license will automatically terminate upon the expiration or termination of Licensee's subscription. In addition to any rights or remedies Open-Xchange may have, Open-Xchange may terminate Licensee's license and revoke Licensee's authority to use or have the Software used without prior notice to Licensee if Licensee breach any provision of this Agreement. Upon the expiration or termination of Licensee's license, Licensee agree to destroy all copies of the Software on Licensee's computers, disks and other digital storage devices.

## Trademarks

Open-Xchange is the sole owner of the OX trademark in the United States, the European Union and certain other countries. Licensee may not use any Open-Xchange trademark without Open-Xchange's prior written consent, which Open-Xchange may withhold in its discretion.

## Copyrights

Licensee acknowledges that the Software and its documentation are protected by copyright and other laws and that Open-Xchange is the sole owner of all rights in and to the Software and its documentation. Licensee has no rights in the Software or its documentation except as set forth in this Agreement and in any other written agreement Licensee may have with Open-Xchange.

## Infringement

In the event that a third party brings a legal action against Open-Xchange alleging that use of the Software infringes a patent, copyright or trade secret, Open-Xchange reserves the right to modify or replace the Software in a manner that retains the same functionality and ease of use of the Software in all material respects, or to procure a license therefor. If Open-Xchange determines that no such alternative is reasonably available, Open-Xchange may terminate this Agreement and the license created by this Agreement and Licensee will cease all use of the Software. Open-Xchange will have no liability to Licensee as a result of such termination. **This section states the entire liability of Open-Xchange and its representatives for infringement.**

## Backups

Licensee agrees regularly to back up the data Licensee derive from Licensee's use of the Software. Licensee acknowledges that any failure to do so may significantly decrease Licensee's ability to mitigate any harm or damage arising from any problem or error in the Software.

## No Warranties

Open-Xchange delivers the Software on an "as is" basis. Any reliance upon the Software is at Licensee's own risk. Open-Xchange is not responsible for any consequence of Licensee's use of or reliance upon the Software.

**To the maximum extent permitted by applicable law, Open-Xchange disclaims all warranties, either express, implied or otherwise, including, but not limited to, implied warranties of title, merchantability, or fitness for a particular purpose.**

## Limitation of Liability

To the maximum extent permitted by applicable law and regardless of whether any remedy herein fails of its essential purpose, in no event will Open-Xchange be liable for any special, incidental, indirect, consequential or punitive damages whatsoever arising out of this Agreement or the use of or inability to use the Software (including, without limitation, damages for lost information, lost profits or business interruption), even if Open-Xchange has been advised of or should have known of the possibility of such damages. In no event will Open-Xchange be liable for damages in contract, tort or otherwise in excess of the amounts received by Open-Xchange from LICENSEE for Licensee's use of Software during the one-year period immediately preceding the date the cause of action arises. In no event may Licensee bring an action against Open-Xchange more than one year after the cause of action arises. Some jurisdictions do not allow limitations on implied warranties or the exclusion or limitation of incidental or consequential damages, so the above limitations and exclusions may not apply to Licensee. In such jurisdictions, Open-Xchange's liability is limited to the greatest extent permitted by law.

## Miscellaneous

**Third Party Software.** Portions of the Software may use or include third party software and other copyrighted material. Acknowledgements, licensing terms and disclaimers for such material are contained in separate agreements. Licensee's use of such material is governed by the terms of the applicable agreements.

**No Transfer of Rights.** Licensee may not transfer, sublicense or assign the rights granted under this Agreement to any other person or entity, except that if Licensee is a Licensee with multiple licenses, Licensee may change the end-users authorized by it to use the Software from time to time.

**Entire Agreement; Amendments.** This Agreement constitutes the entire understanding between Open-Xchange and Licensee relating to the Software. This Agreement may not be amended or changed except in writing signed by Licensee and Open-Xchange.

**Waivers.** No delay or failure to exercise any right or remedy provided for in this Agreement will be deemed to be a waiver.

**Severability.** If any provision of this Agreement is held invalid or unenforceable, for any reason, by any arbitrator, court or governmental agency, department, body or tribunal, the remaining provisions will remain in effect.

**Governing Law.** This Agreement will be governed by the law of Germany

## Further Information

Open-Xchange AG is based in Nuremberg, Germany. If you have any questions about this Agreement, please contact us at [legal@open-xchange.com](mailto:legal@open-xchange.com). If you have any questions about licensing that aren't answered on our website, please contact us at [licensing@open-xchange.com](mailto:licensing@open-xchange.com).

For further Information about Open-Xchange's products, contact Open-Xchange at:

E-mail: [info@open-xchange.com](mailto:info@open-xchange.com)

Web: [www.open-xchange.com](http://www.open-xchange.com)

January 2011

